



KHUSHIYON KA ADDRESS

Central Greens

PLOTS AND VILLAS



Content

01	Central Greens - Project Overview
02	About Orilite Lifespaces
03	Why Invest in Land
04	Why Invest in DCM Road, Kota
05	Map of Kota – Spotting Central Greens
06	Why Invest in Central Greens
07	Central Greens – Khushiyon Ka Address
08	Garden Layouts
09	Site Plan of Central Greens
10	RERA Details
11	Our Group of Companies
12	Contact Us

Build Your Family's Dreams at Central Greens: Your Khushiyon Ka Address

Imagine a place where laughter echoes through lush green gardens, children's dreams take flight, and family bonds grow stronger with each passing day. At Central Greens, Kota's address of happiness, This vision becomes a reality. And now, you have the unique opportunity to build your family's future on a foundation as solid as the land itself.

About Orilite Lifespaces

For over a decade, Orilite Lifespaces has been shaping Kota's skyline with quality, innovation, and trust. Every project we craft is a promise of joy—designed to bring families closer, nurture communities, and create memories that last a lifetime.



Why Choose Orilite Lifespaces?

- A Legacy of Happiness: Over 11 years of turning dream homes into reality.
- Homes for Everyone: Flats, plots, and villas tailored to diverse needs.
- Built Around You: Thoughtfully crafted for families and investors alike.
- Prime Locations: Strategically placed for maximum connectivity and growth.
- Trusted by 1000+ Families: A name that over 1,000 families in Kota rely on for their dream home.

Why Invest in Land?

Investing in land isn't just about ownership—it's about freedom, security, and an opportunity to build a home that truly reflects you. At Central Greens, we believe your Khushiyon Ka Address should be Built by You & Built for You.

- A Home That Feels Like You: Whether it's a garden for your kids, a cozy corner for family gatherings, or a space designed with love—your land, your rules.
- Built by You, Built for You – Here, you don't just buy land; you craft a home your way—one that suits your lifestyle, memories, and aspirations. From the first brick to the last detail, every corner will be a reflection of your dreams.
- A Lasting Legacy: Land is a timeless investment that grows with you, offering financial security and a future filled with happiness.



WELCOME TO CENTRAL GREENS, WHERE EVERY MOMENT IS STEEPED IN HAPPINESS AND EVERY CORNER RESONATES WITH JOY.



- Perfect Location: In The Heart of Kota's Growth Corridor.
- Iconic Design: Greek & Roman-Inspired, Eco-Friendly Living.
 - Ideal Living: Premium Plots For Families

Why Invest in DCM Road?

At Central Greens, we believe that building your Khushiyon Ka Address begins with choosing the perfect location—one that offers unmatched connectivity, growth, and convenience. And what better place than DCM Road—Kota’s fast-growing hub for a seamless lifestyle and a secure future:



Seamless Connectivity – With malls, railway stations, hospitals, and markets just minutes away, everything you need is always within reach.



A Fast-Growing Hub – located in one of Kota’s most promising areas, ensuring strong future value and long-term appreciation.



Everyday Convenience – Thoughtfully planned with essential facilities nearby, making daily life smooth and hassle-free.



A Secure Investment – A location that not only enhances your lifestyle today but also secures your family’s future for years to come.

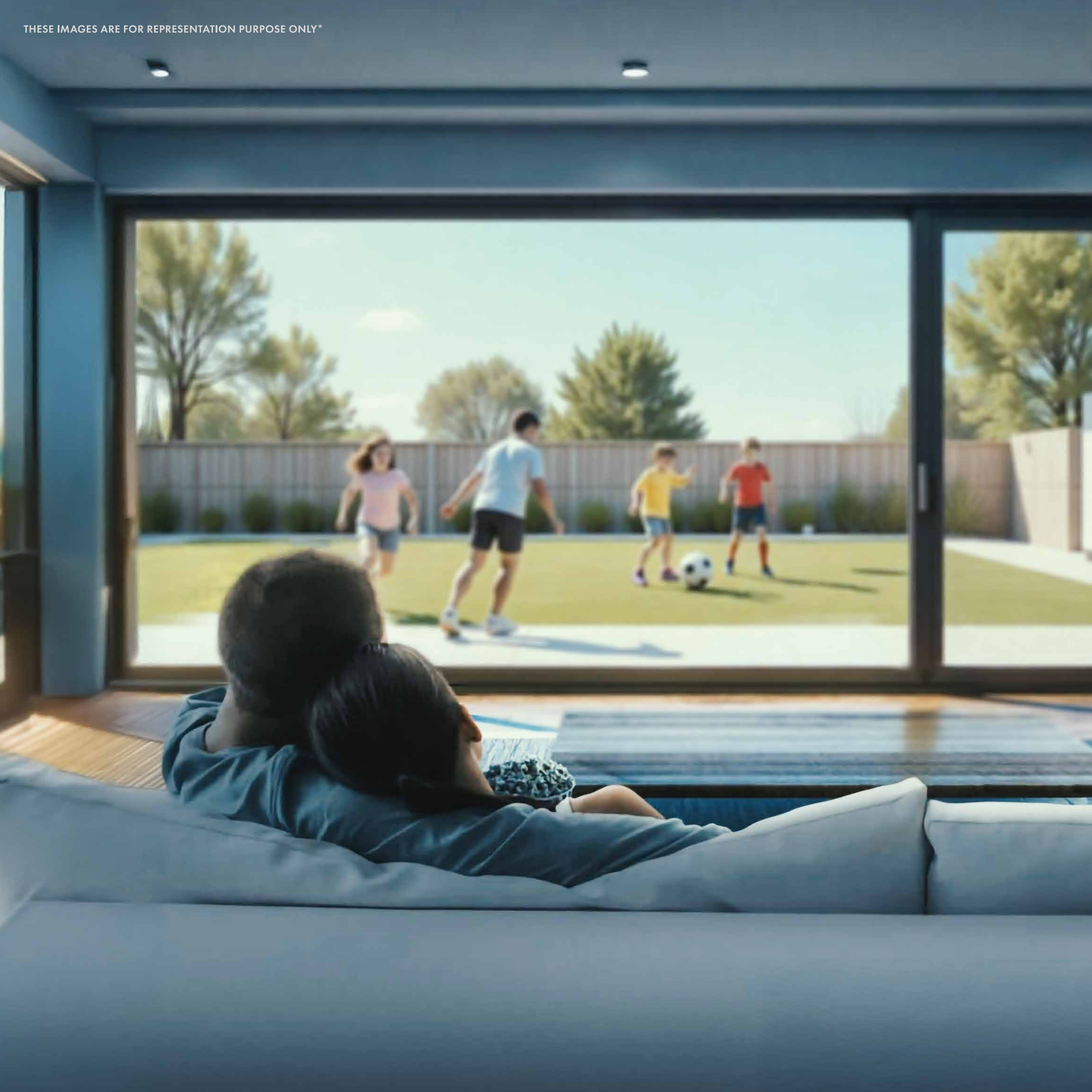


- Aerodrome Circle - 5 minutes
- Ahluwalia Mall - 3 minutes
- Multimetals Limited - 3 minutes
- Chhatrapati Shivaji Park - 1 minute
- DCM Circle - 2 minutes
- Dakaniya Station - 7 minutes
- City Park - 10 minutes
- City Mall - 12 minutes
- Hospitals - 8 minutes
- Coaching Institutes - 8 minutes
- Upcoming New Airport - 30 minutes
- Kota Junction - 20 minutes

Why Invest in Central Greens?

An Orilite Lifespaces project, Central Greens is where you build your Khushiyon Ka Address—a home that offers happiness, security, and long-term growth.

- Prime Location – Situated on DCM Road, Kota, ensuring seamless connectivity and high appreciation potential.
- Unmatched Amenities – 40+ world-class features, including Kota's first Croquet Court.
- Smart Investment – Promises strong returns for homebuyers and investors.
- Thriving Community – A safe, vibrant neighborhood designed for togetherness.
- Future-Ready Living – Thoughtfully planned for comfort, convenience, and happiness.
- Advanced Infrastructure: Underground utilities, including water, electricity, and optical fiber for a seamless living experience.



Why Central Greens is Your Khushiyon Ka Address

At Central Greens, every amenity is crafted with your family's happiness in mind—because nothing matters more than the joy on their faces as they live, grow, and create memories here;



A Breath of Fresh Air – Imagine waking up to lush green landscapes, where every sunrise brings a sense of peace and every evening is a chance to unwind with your loved ones.



Designed for Togetherness – From safe play areas for kids to serene walking trails for evening strolls, every corner here is meant to bring families closer.



A Neighborhood That Feels Like Home – More than just a community, it's a place where friendships bloom effortlessly, and every festival feels grander.



Happiness in Every Detail – With 40+ thoughtfully designed amenities, including Kota's first Croquet court, there's always something to bring a smile to every generation.



Central Greens Khushiyon Ka Address



KHUSHIYON KA ADDRESS













Central Greens

PLOTS & VILLAS

Experience an Oriliteful life at Central
Greens, where 40+ world-class amenities
and vibrant themed gardens combine to
create a haven of joy.

Highlights

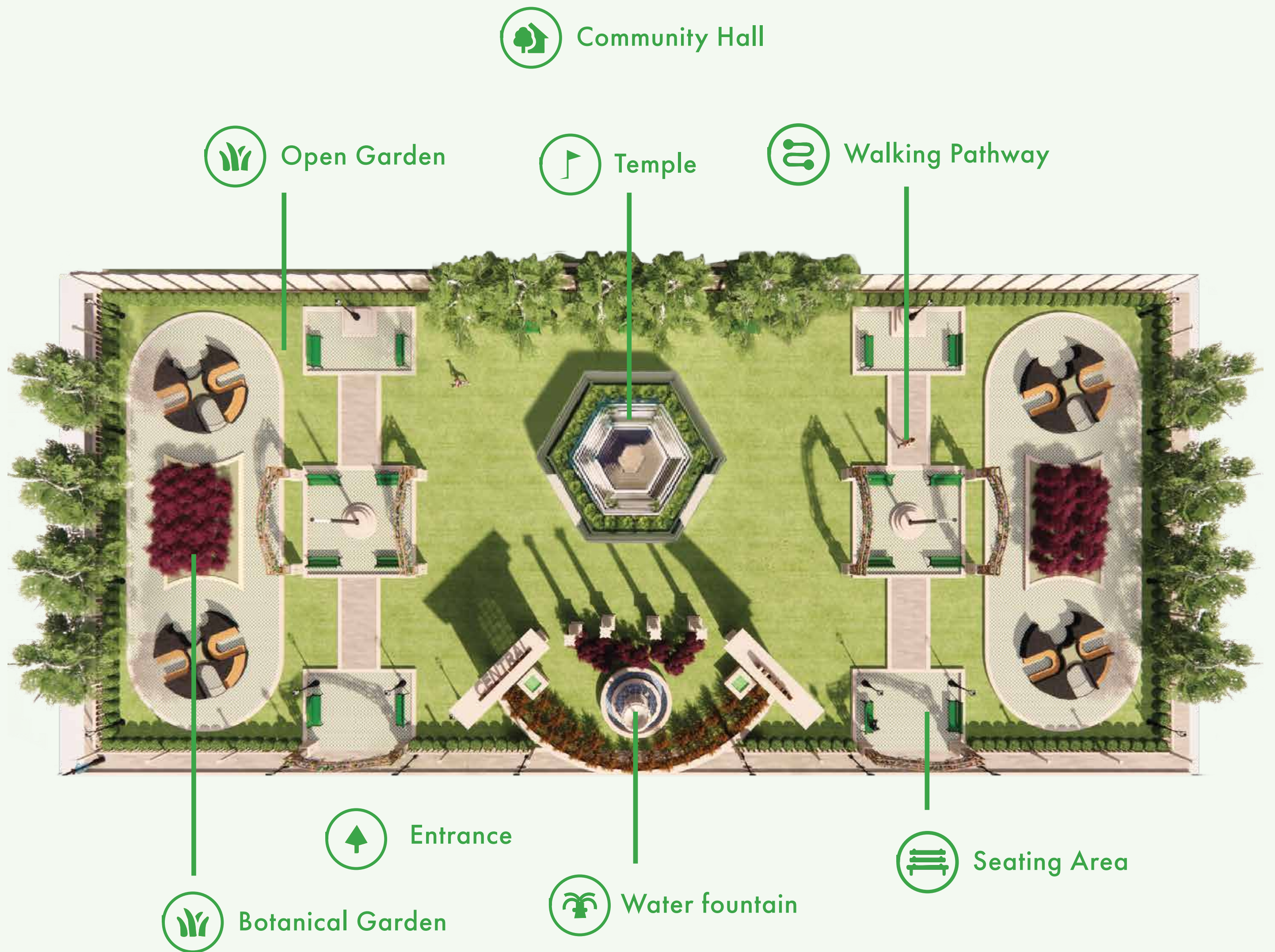
-  JUNGLE GYM
-  PICKLEBALL COURT
-  TEMPLE
-  BASKETBALL COURT
-  VOLLEYBALL COURT
-  BADMINTON COURT
-  CROQUET COURT
-  KIDS PLAY AREA
-  TENNIS COURT
-  OPEN GYM
-  YOGA DECK
-  UNDERGROUND WATER
& ELECTRICITY SUPPLY

-  MULTI-PURPOSE COURT
-  JOGGING TRACK
-  BOTANICAL GARDEN
-  SIT OUT SPACES
-  OPEN LAWN
-  WALKING PATHWAY
-  PAVILLION SEATING
-  LONG TENNIS COURT
-  FUTSAL FIELD
-  COMMUNITY HALL
-  UNDERGROUND
OPTICAL FIBER
-  *& many more.*



House of Bloom

GARDEN ONE



Embrace serenity at House of Bloom, where a peaceful temple, open garden seating, and a scenic jogging pathway offer the perfect retreat for reflection and relaxation.

House of Bloom

GRAND ENTRY



THE GREETING COURT



MAIN DRIVE WAY



SEATING AREA

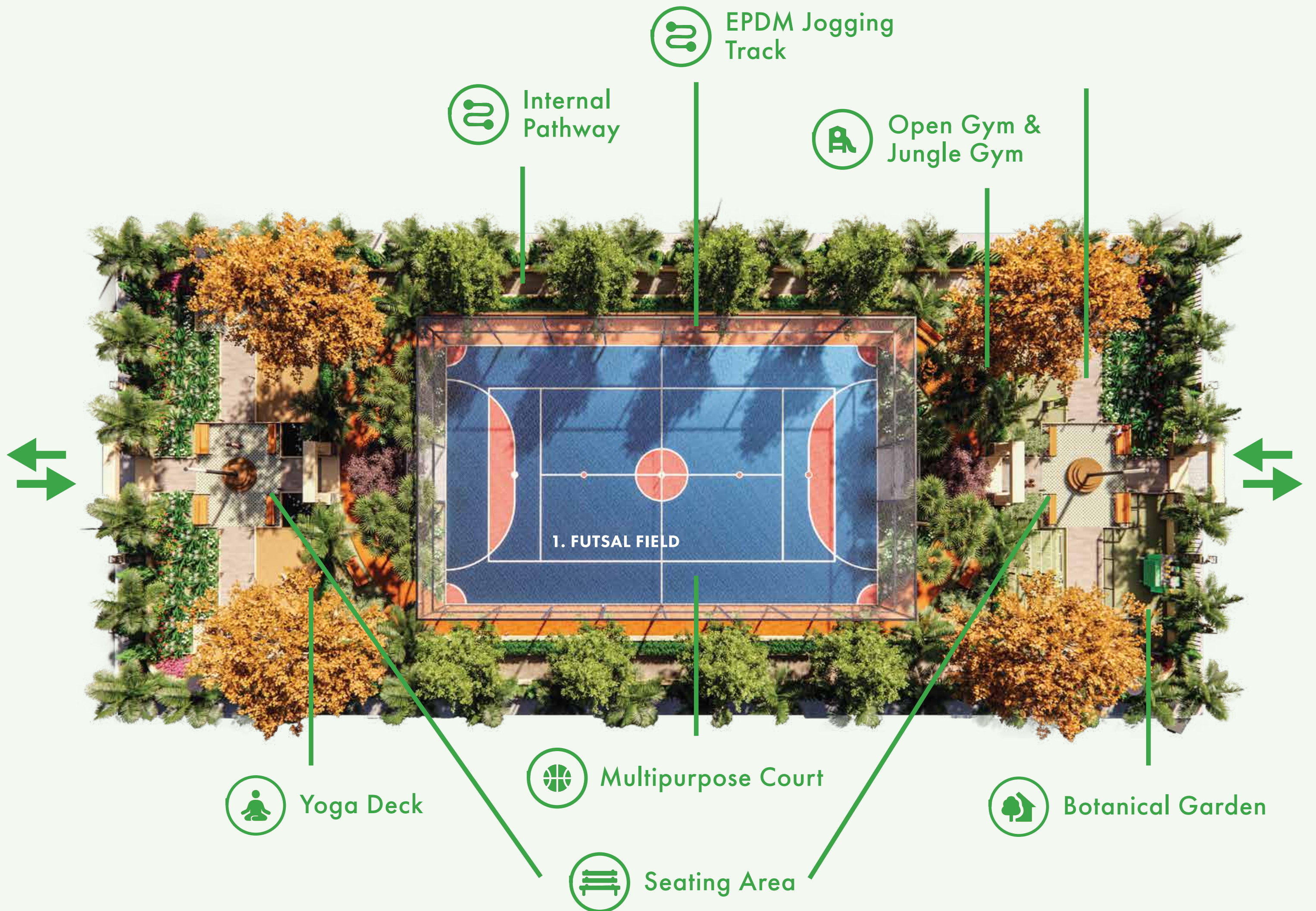


THESE IMAGES ARE FOR REPRESENTATION PURPOSE ONLY*



House of Energy

GARDEN TWO



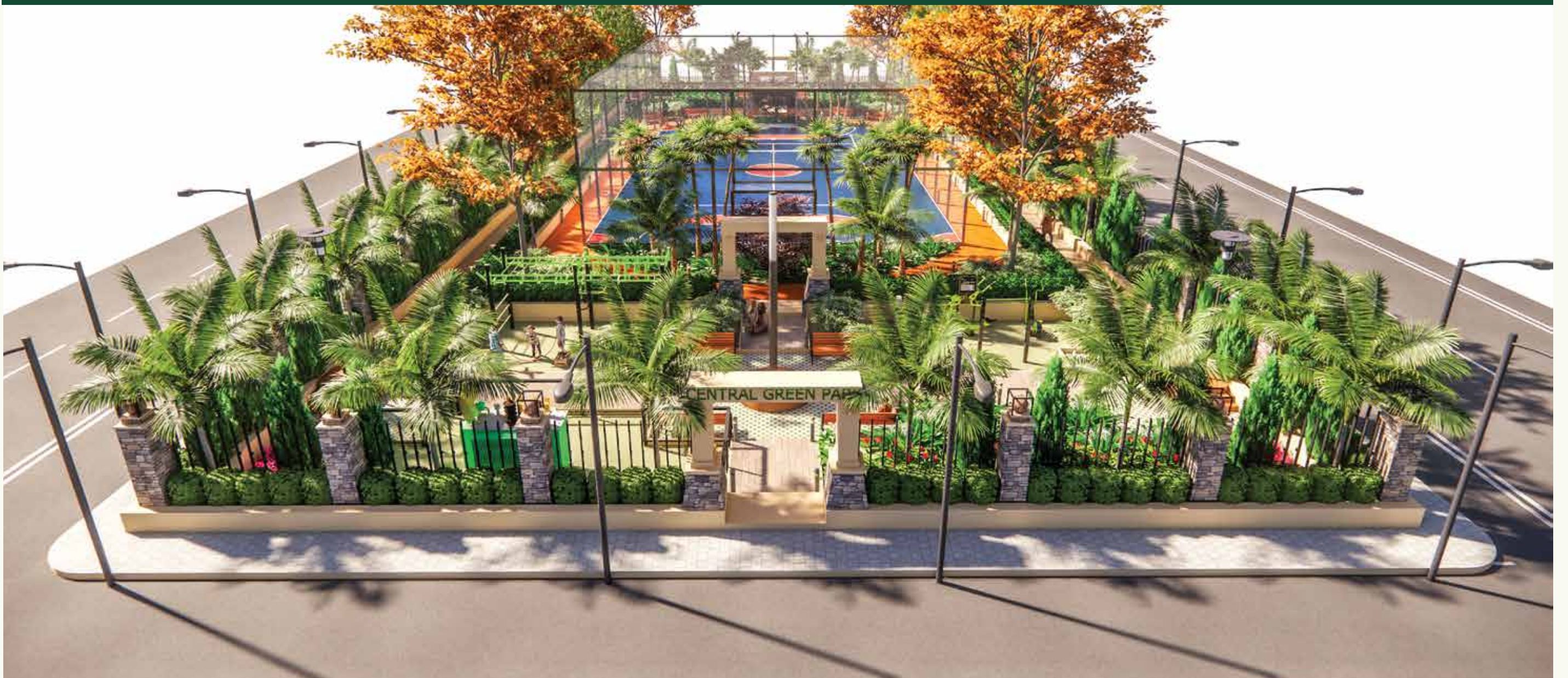
Find balance at House of Energy a thoughtfully designed space featuring yoga & wellness zones, a lush botanical garden, and a multipurpose court to rejuvenate both body and mind.

House of Energy

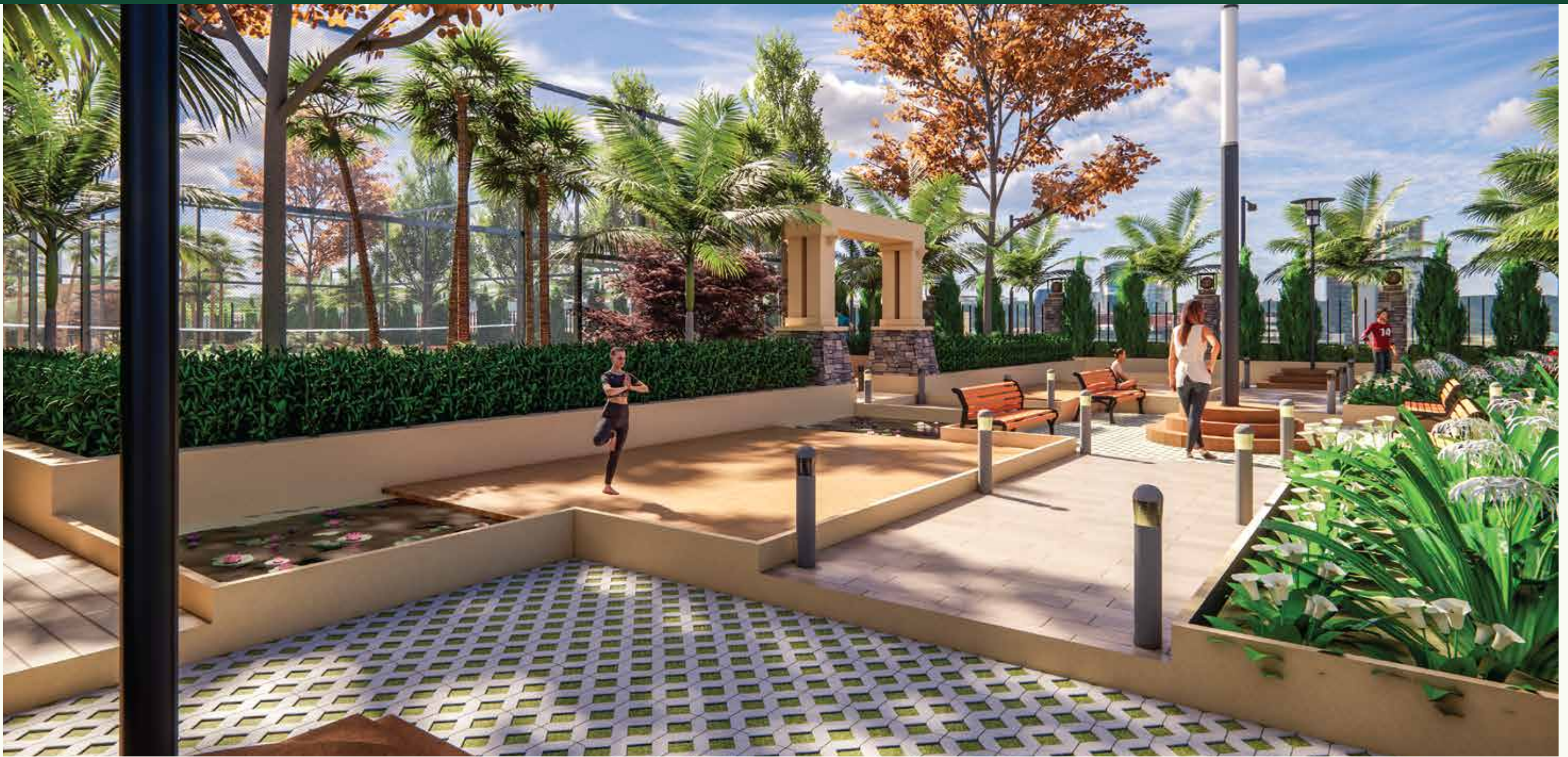
WALKING PATHWAY



MAIN ENTRANCE



YOGA DECK



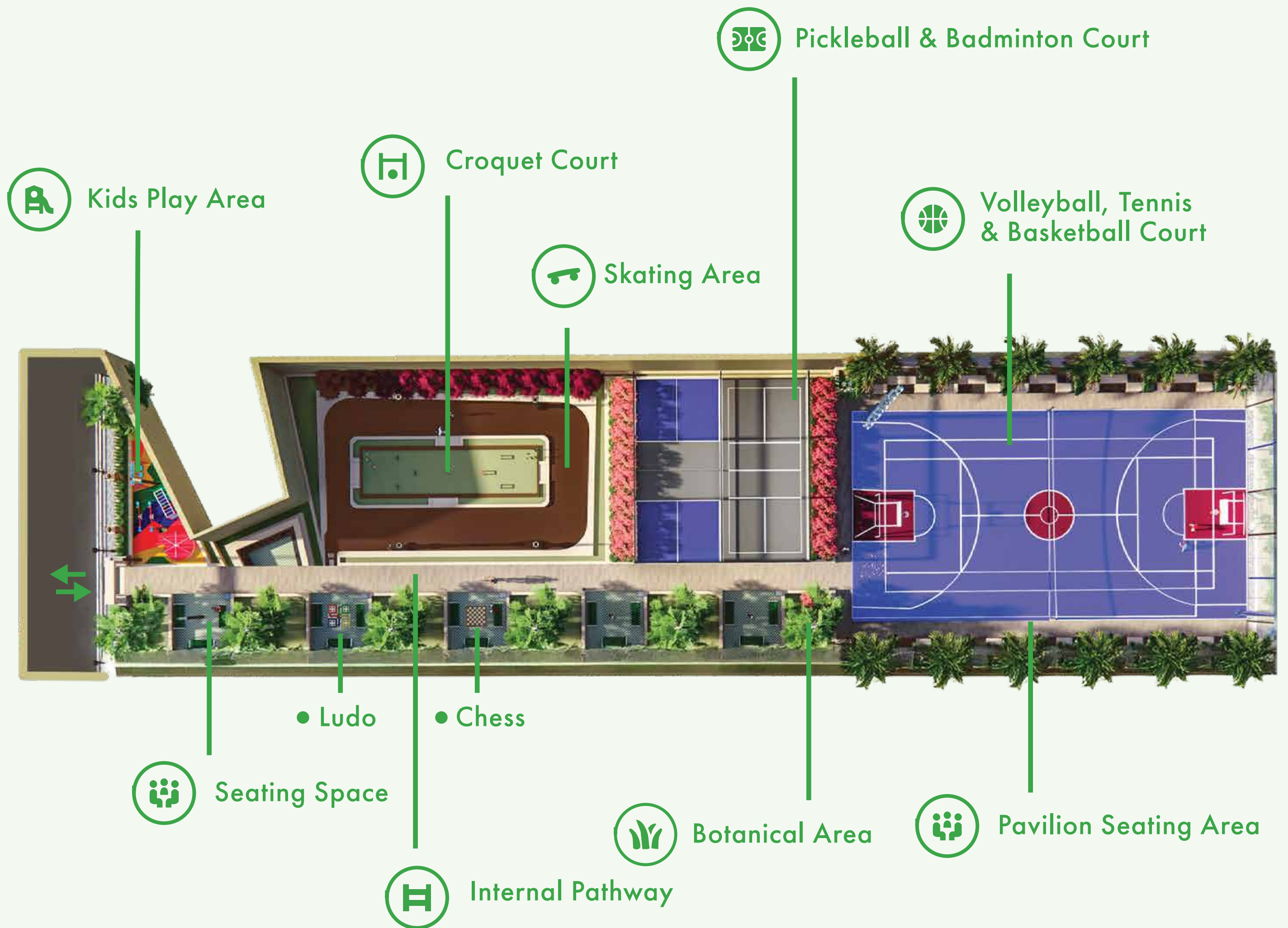
JOGGING TRACK





House of Fun

GARDEN THREE



Unleash your inner athlete at House of Fun, where world-class courts for basketball, pickleball, tennis, and badminton create the ultimate playground for sports enthusiasts and thrill-seekers.

House of Fun

CROQUET COURT



VOLLEYBALL, TENNIS & BADMINTON COURT



KID'S PLAY ZONE



PICKLEBALL & BADMINTON COURT



THESE IMAGES ARE FOR REPRESENTATION PURPOSE ONLY*



BOUNDARY WALL

KANSUWA AREA

FA-2

40' WIDE ROAD

40' WIDE ROAD

40' WIDE ROAD

COMM.-2

TO AERODROM

PROJECT ENTRANCE

ROAD 200'-0"

TO D.C.M

FA-1
CONVENTION
CENTER

COMM.-1

40' WIDE ROAD

40' WIDE ROAD

40' WIDE ROAD

40' WIDE ROAD

40' WIDE ROAD

30' WIDE ROAD

30' WIDE ROAD

ROAD 9 M ROAD

SUWA COLONY

KANSUWA COLONY

ROAD

PREMIUM GATED TOWNSHIP



Rera Details

Central Greens:

The Project has been registered under Rera Registration number RAJ/P/2024/3439 via www.rera.rajasthan.gov.in

Orilite Lifespaces:

The Firm has been registered under Rera Registration number RAJ/A/2021/2109 via www.rera.rajasthan.gov.in

CENTRAL GREENS COMPLIES WITH ALL RERA GUIDELINES, ENSURING TRANSPARENCY AND TRUST FOR OUR CUSTOMERS.

Our Group of Companies



India's leading high-end furniture brand.



Quarrying and processing company.



Asia's largest copper alloy tube manufacturer and exporter.



Constructed 2.5 million sq.ft. of Residential, Commercial & Institutional projects using advanced tech.



Leading manufacturer of AAC and building solutions.



A leading retail furniture brand for every Indian.



Rapidly growing ready-to-eat brand of India catering to indigo airlines and IRCTC etc.



CONTACT US

Phone: 8239155555

Email: info@orilifelife.com

Website: www.orilifelife.com

Address: 200 ft. Main DCM Road, Kota Rajasthan

Details of Promoter:
Horizon Projects & Infrastructure
Private Limited